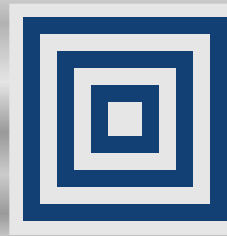


Commercial Grade Steel Doors



www.SecurallDoors.com



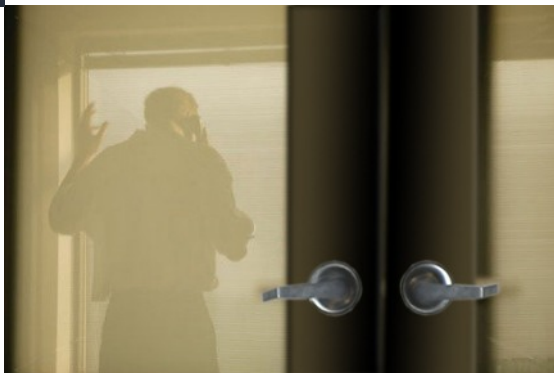
*Contractor Friendly
Pre Assembled
Steel Doors
& Frames*



Introducing StormSafe Doors See Page 11-12

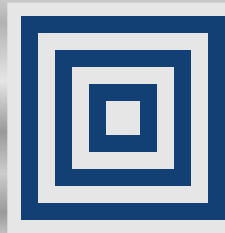
**Pre-hung, Pre-Assembled, Steel Doors, & Frames
Custom Steel Doors and Stainless Steel Doors
for Residential & Commercial Projects**

5122 N. State Road 39
La Porte, IN 46350
Ph: 888-326-7890
Fax: 888-324-3780



**UL Classified with 45 -180 Minutes
Fire Rating**

Pre Assembled Steel Doors



Securall

Securall® Doors has more than 40 years of experience in manufacturing the finest in quality Hollow Metal Doors and Frames. We have prided ourselves on building mutually beneficial business relationships with our valued customers, vendors and associates.

Securall® Heavy-duty, reinforced steel doors are designed for use in **industrial, commercial or residential applications**. Available in single or double panel configuration, Securall® doors and frames are available for installation in masonry, steel or wood stud construction. Securall®'s **Pre-Hung and Pre-assembled Steel Doors** provide a **contractor friendly** and **cost effective** means of reducing on-site labor and costs by streamlining the purchasing of products. Securall® Steel Doors are rugged, durable and have been Underwriters Laboratories tested and approved for 45 minute,

1 ½ Hour and 3 Hour Fire-Ratings.

Securall® Steel Doors are available with standard assembly or with our exclusive **Pre-Assembled Option**. Our doors are hung by heavy-gauge steel hinges with available hardware configurations including locksets, panic exit devices, closers and view lites, to name a few.

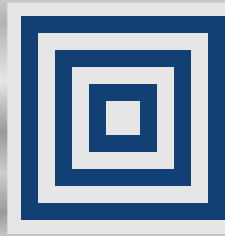
Full Flush door panels and frames are constructed of galvanized steel. Galvanizing is a thermal process that provides improved paint adhesion, prevents rust and has a higher weld-ability than galvanized steel. Our Heavy Duty, Reinforced Steel Doors are also available in stainless steel. Securall® can also build to fit your specific needs in custom door sizes and configurations of hardware.



A quick review of Securall® Steel Doors advantages over other hollow metal doors and frames:

- ✓ Ready for use in **industrial, commercial and residential applications**
- ✓ All doors are **Pre-hung** with **Pre-assembly** of all hardware
- ✓ **Contractor friendly** and **cost effective**
 - **Reducing** labor cost
 - **Streamlining** purchasing
 - High quality **commercial grade** products

Standard Features



Securall

Standard Series

Full Flush Steel Stiffened Door

The Securall® standard steel stiffened *Full Flush Steel Door* is a symbol of excellence in quality, construction and functionality. The design allows for a smooth finish that gives a strong look and feel to the door. The flush door is an ideal match for Commercial and Residential use in almost any application.

The door panel is constructed by placing both halves of the door panel together using our interlocking channel system. The internal core of the door is constructed with steel stiffeners that extend the entire height of the door panel and are adhered to both sides of the door panel. Securall® Doors are U.L. Listed for up to 3-hour fire rating.

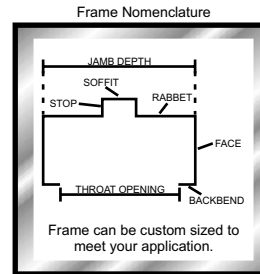
Knock Down or Welded Steel Frames

The Securall® standard *Knock Down or Welded Steel Frames* are excellent for both residential and commercial use. The knock down and welded options allow our doors to be versatile depending on the application. Both the Knock Down and Welded frames are U.L. Listed for up to 3-hour fire rating.

The knock down option is a great choice for existing construction where a pre-existing opening is already prepared for a door. The three separate pieces of the frame make it easy to install one piece at a time to ensure an exact fit and secure holding ability for the specific wall construction.

The pre-welded option works very well for new construction. The doors can be placed in their openings and the wall can be easily built around the frame, making the structure firmer as a whole.

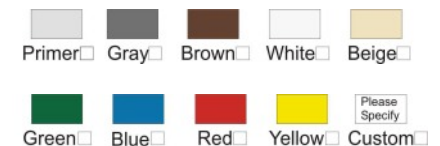
Insulation: Foam board insulation is used to thermally insulate the door. The foam board has an R value of 9.



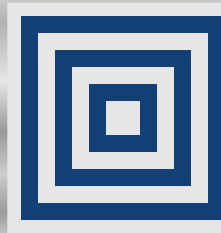
Pre-install Hardware:

Securall® offers a unique option of Factory Pre-installation of hardware to make it easier for you, the end user. This option is designed to help streamline the process of receiving and installing doors. By choosing to have Securall® professionally install all of the hardware at our factory, the contractor saves hours of onsite labor and the costs associated with it.

Paint Colors:



Standard Models



Securall



Standard Models – 80" H

Door Width (in.)	Panels	Model No.	Weight (lbs.)
30	Single	HD30x80	151
36	Single	HD36x80	169
42	Single	HD42x80	205
60	Double	HD60x80	253
72	Double	HD72X80	265

Standard Models – 84" H

Door Width (in.)	Panels	Model No.	Weight (lbs.)
30	Single	HD30x84	157
36	Single	HD36x84	175
42	Single	HD42x84	193
60	Double	HD60x84	265
72	Double	HD72X84	277



View Lites & Louvers



2 x 30

#3



20 x 54

#4



22 x 34

#5



10 x 10

18 x 18

#6

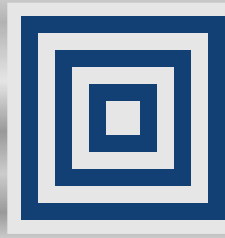


4 x 25

#7

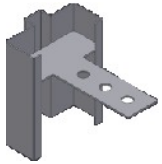
Size & Type	Non Rated	45 Min Fire Rating	90 Min Fire Rating	3 Hour Fire Rating
10x10 Wired	●	●	●	
10x10 Tempered	●			
10x10 Ceramic			●	●
4x25 Wired	●	●	●	
4x25 Tempered	●			
4x25 Ceramic			●	●
22x34 Wired	●	●		
22x34 Tempered	●			
22x34 Ceramic			●	
20x54 Wired	●	●		
20x54 Tempered	●			
20x54 Ceramic			●	
Louver Size				
12x12	●	●	●	
18x18	●	●	●	

Accessories



Securall

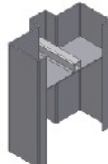
Anchor Types:



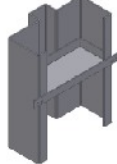
T-Anchor



Floor Anchor



Pipe Anchor



Stud Anchor

Hinge Types:

4-1/2" x 4-1/2" Full Mortise Hinges: Used on non-rated doors (standard).

4-1/2" x 4-1/2" Ball Bearing Hinges: Used on Fire Rated doors to allow for free movement with the door closer.

4-1/2" x 4-1/2" Self Closing Spring Hinges: Used to replace a door closer either on fire rated or non-rated doors. The hinges will automatically close the door.

4-1/2" x 4-1/2" Non Removable Pin Hinges: Used for security to insure the door will not be removed from frame.

Continuous Geared Hinges: Used for large heavy door panels to insure secure attachment to the frame.

Lockset:

Knob Style Lockset: Entry, passage or storeroom functions available in Grade 1 or 2 (stainless steel finish standard).

Lever Style Lockset: L shaped handle. Entry, passage or storeroom function available (brushed chrome finish standard).

Mortise Lockset: L shaped handle. Entry function with deadbolt lock included (brushed chrome finish standard).

Exit Device: Panic (push) bar hardware. (stainless steel finish).

Trim Handles: Lever, pull bar or none (exit only door) available as options to complete the exit device package.

Push and Pulls: Non-latching push & pull set (stainless steel).

Deadbolt: Additional lock for added security (stainless steel).



Door Closer: Automatic closer with optional hold open and fire rating.

Kickplates: Available to fit door width.

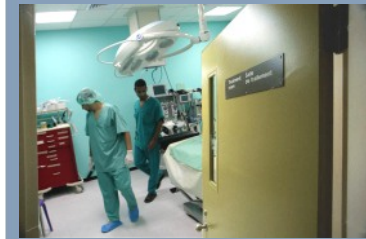
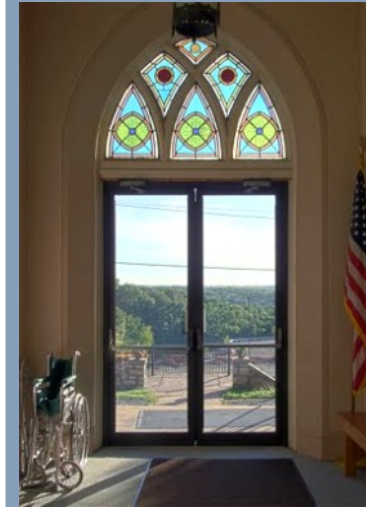
Weather Stripping: Self-adhesive material used to seal the door to frame to help with exterior wind, weather and insect control.



Door Sweep: Used in conjunction with weather stripping to help seal the bottom of the door when closed.

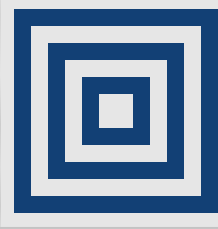


Threshold: Use in conjunction with the door sweep to keep out wind and water, as well as separate rooms.





Fire Rating



Securall

SECURALL® STEEL DOORS AND FRAMES ARE RUGGED, DURABLE AND HAVE BEEN UNDERWRITERS LABORATORIES TESTED AND APPROVED FOR 45 MINUTE, 1 1/2 HOUR, AND 3 HOUR FIRE-RATINGS.

Maximum Fire Rating	Available Gauges	Maximum Door Size	Door Type
45 Minute	18	48"Wx96"H 84"Wx96"H	Single Double
1-1/2 Hour	18	48"Wx96"H 84"Wx96"H	Single Double
3 Hour	18	42"Wx84"H 84"Wx84"H	Single Double

Also available in 16 gauge up to 3 Hour, and 14 gauge up to 1-1/2 hour at a 72" width maximum

ASTM A568 - Standard Specification for Steel Sheet, Carbon, and High-Strength, Low-Alloy, Hot-Rolled and Cold-Rolled, General Requirements for.

ASTM A591/A591M - Standard Specification for zinc coatings produced by electro-deposition for light coating weight [mass] applications on steel sheet.

ASTM A653 - Standard Specification for Steel Sheet, Zinc-Coated (Galvanized) or Zinc-Iron Alloy-Coated (Galvanneal) by the Hot-Dip Process.

ASTM A924 - Standard Specification for General Requirements for Steel Sheet, Metallic-Coated by the Hot-Dip Process.

ASTM A1008 - Standard Specification for Steel Sheet, Cold-Rolled, Carbon, Structural, High-Strength Low-Alloy and High-Strength Low-Alloy with Improved Formability.

ASTM A1011 - Standard Specification for Steel Sheet and Strip, Hot-Rolled, Carbon, Structural, High-Strength Low-Alloy and High-Strength Low-Alloy with Improved Formability.

ANSI/SDI A250.3 - Test Procedure and Acceptance Criteria for Factory Applied Finish Painted Steel Surfaces for Steel Doors and Frames.

ANSI/SDI A250.4 - Test Procedure and Acceptance Criteria for Physical Endurance for Steel Doors, Frames, Frame Anchors and Hardware Reinforcings.

ANSI/SDI A250.6 - Recommended Practice for Hardware Reinforcing on Standard Steel Doors and Frames.

ANSI/SDI A250.8 - SDI-100 Recommended Specifications for Standard Steel Doors and Frames; 1998.

ANSI/SDI A250.10 - Test Procedure and Acceptance Criteria for Prime Painted Steel Surfaces for Steel Doors and Frames.

ANSI/SDI A250.11 - Recommended Erection Instructions for Steel Frames (Formerly SDI-105).

DHI A115.1G - Installation Guide for Doors and Hardware.

SDI 111 - Recommended Standard Details for Steel Doors & Frames.

ANSI/NFPA 252 - Fire Tests of Door Assemblies.

ANSI/UL 10B - Fire Tests of Door Assemblies.

ANSI/UL 10C - Positive Pressure Fire Tests of Door Assemblies.

ANSI/UL 1784 - Air Leakage Tests of Door Assemblies

UL - Building Materials Directory; Underwriters Laboratories Inc.

WH - Certification Listings; Warnock Hersey International Inc.

NFPA 80 - Fire Doors and Fire Windows.



#8



#9



#10



#11



#12

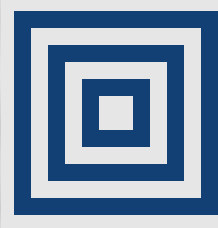


#13



#14

Tornado Safe Room Doors



Securall



**CONSTRUCTED IN ACCORDANCE WITH
(FEMA) FEDERAL EMERGENCY
MANAGEMENT AGENCY
RECOMMENDED DESIGN SPECIFICATIONS**

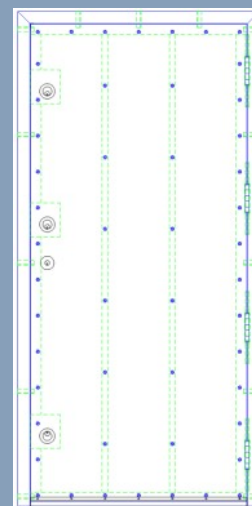


**STORMSAFE® DOOR STANDARD FEATURES: 36 IN. WIDE X 80 IN. H DOOR
(OVERALL DIMENSIONS, INCLUDING FRAME: 40 IN. WIDE X 82IN. H)**

Securall® **StormSafe® Doors** are constructed in accordance with Federal Emergency Management Agency (FEMA) recommended design specifications. The design is based on extensive research of the causes and effects of windstorm damage to buildings and should provide a high degree of occupant protection during extreme windstorms (tornadoes and hurricanes). A Securall® **StormSafe® Door** is a critical element when designing a safe room for protection against severe storms.

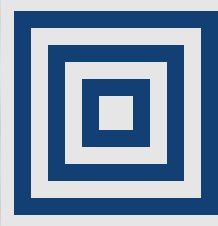
Strong tornadoes have resulted in loss of the floor framing, collapse of basement walls and/or death and injuries to individuals in the basement. By having a safe room in your home, you can protect your family and save the lives of those you care about.

For more information on safe room designs and construction, please refer to:
<http://www.fema.gov/plan/prevent/saferoom/fema320.shtm>.



- 12 Gauge Galvannealed Steel Door and Frame.
- Door Skin Attached With 1/4" Dia. x 1-1/4" Long Hex Head Screws, Front and Back.
- Rigid Polyurethane Foam Core.
- (2) 12 Gauge Vertical Steel Stiffeners Inside Door Panel.
- Perimeter of Door Panel Reinforced with 12 Gauge Steel Channel.
- (13) 18 Gauge Steel Pipe Anchors. 5 in each Frame Jamb and 3 in Frame Head. Wood or Masonry Screws Included.
- Door and Frame Finished in Light Gray Epoxy Urethane Primer.
- (3) Grade 1 Deadbolts with 1" Throw. Keyed Alike.
- (3) 7-Gauge Lock and Strike Reinforcements at each Deadbolt Location.
- Knob Style Locking Handle. Keyed Like Deadbolts.
- (4) Heavy Duty Ball Bearing Hinges.
- Perimeter of Door Sealed with Screw-On Type Weatherseal.
- 10" x 2" High Impact View Lite.

Picture Gallery



Securall



#15

#16

#17

#18

#19



#20



#21



#22



#23

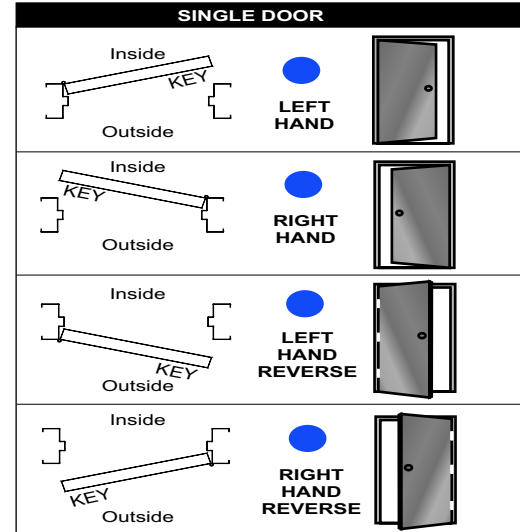


#24

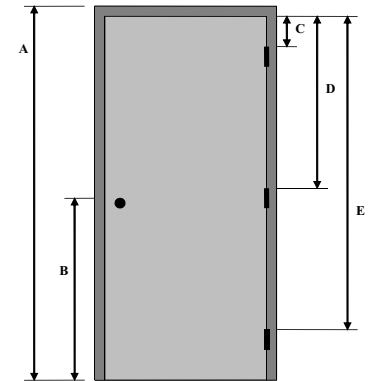


#25

DOOR HANDING As Seen From Outside



HARDWARE LOCATIONS



H"	A	B	C	D	E
80	79 1/8	39 9/16	7 3/8	37 1/4	67 1/8
84	83 1/8	41 9/16	7 3/8	39 5/16	71 1/4

